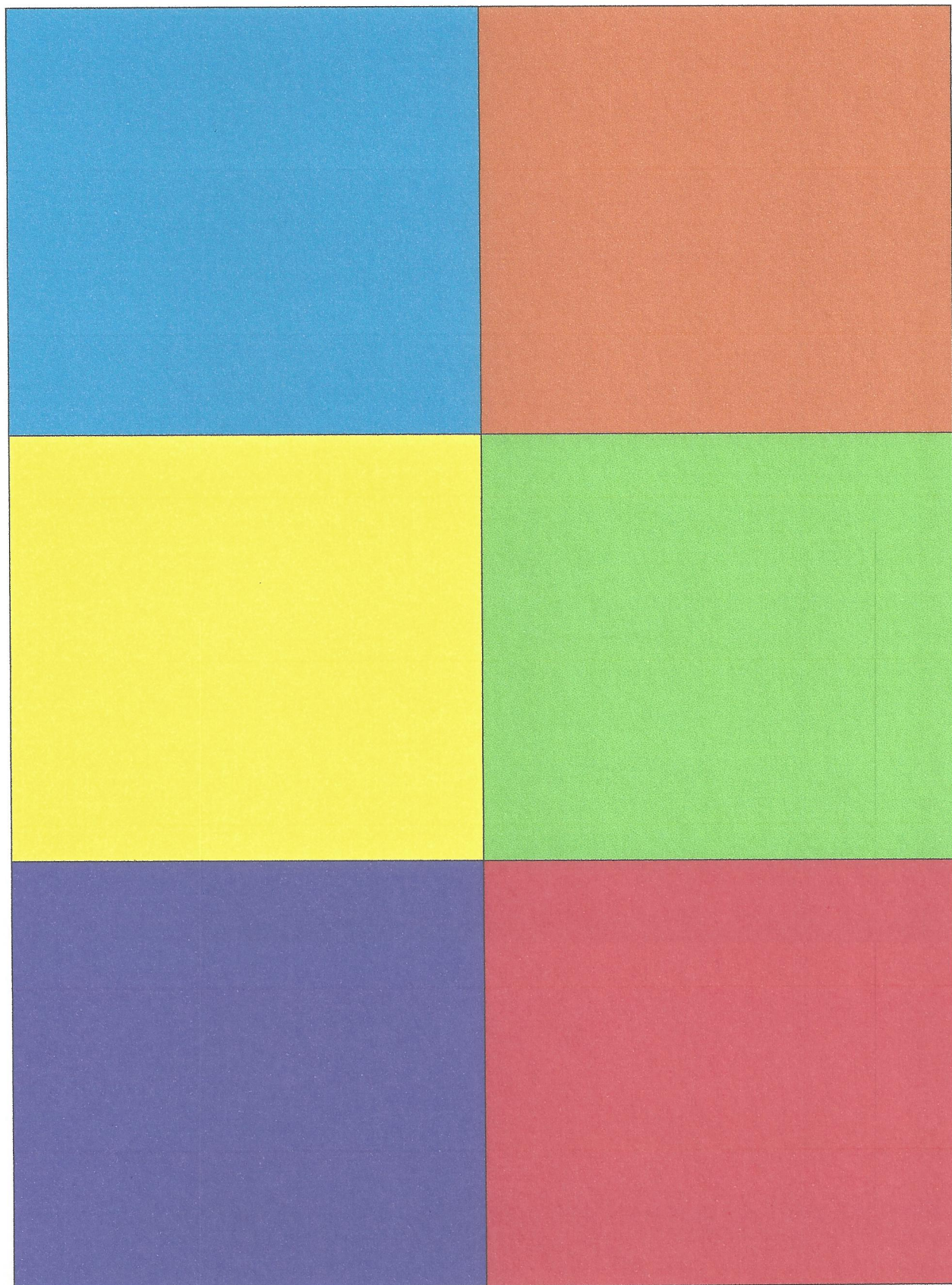


This alphabet can be used in a variety of ways: create an alphabet 'strip' by attaching 'E' to 'D', 'I' to 'H' and so on. Alternatively, cut letters apart, mix and then put in ABC order. Or, print two sets, cut apart and create an alphabet memory/matching game.





A	B	C	D
E	F	G	H
I	J	K	L
M	N	O	P
Q	R	S	T
U	V	W	X
Y	Z		